

# CAMBRIDGE SCIENTIFIC LABS

LAB BROCHURE



ARLINGTON ST. & DEXTER AVE.  
**WATERTOWN, MA**

[WWW.CAMBRIDGESCIENTIFIC.COM](http://WWW.CAMBRIDGESCIENTIFIC.COM)

# ABOUT

## CAMBRIDGE SCIENTIFIC LABS



[CLICK TO WATCH OUR VIDEO](#)

Scientists, researchers, and other professionals can affordably rent fully furnished private labs or space in our shared lab with equipment from Cambridge Scientific.

Lab sizes range from 350 to 1,500 square feet. Larger sized labs include private offices, conference rooms, and kitchens. All labs have guaranteed 24/7 access so you are able to access them anytime you need to.

### AMENITIES

- Thermo Fisher eProcurement System
- On-site EHS and Lab OPS Support
- Site Specific Safety Manuals
- Monthly Lab Trainings
- Lab Coats
- Bio Waste Removal
- Shared Office Space
- Conference Rooms
- Stocked Break Room
- Utilities
- Mass Bio Membership

### INCLUDED EQUIPMENT

- Refrigerated Centrifuge
- Microfuge
- 80 Freezer
- 20 Lab Freezer
- Lab Refrigerator
- Biosafety Cabinet
- Fume Hood
- Gp Oven
- Gp Incubator
- Microscopes
- Analytical Balance
- Autoclave
- pH Meter
- Solvent Cabinet
- Pipettes
- Waterbath
- Vortexers
- Hot Plate stirrers

### AVAILABLE SERVICES & BENEFITS

- Gases (CO<sub>2</sub> & LN<sub>2</sub>)
- Temperature alarms and monitoring
- EHS/safety training
- Biosafety permitting
- Specialty Regulatory Permitting
- EPA Registration or Hazardous Generator Status

# LOCATION

## CAMBRIDGE SCIENTIFIC LABS



Our Incubator Lab Spaces and Shared Suites are Located in the New Life Science Hub of East Watertown, right off Arsenal Street.

### WITHIN 1 MILE:

FOOD & DINING

**20+**

SHOPPING

**15+**

# OVERVIEW

ARLINGTON ST

PRIVATE LAB SUITES

**10**

SHARED LAB BENCHES

**30**

SHARED TISSUE CULTURE ROOM

**2**

SHARED FREEZER ROOM

**1**

LIFE SCIENCE ROOM

**1**

CONFERENCE ROOMS

**3**

STOCKED BREAKROOM

**1**



# LIFE SCIENCE ROOM

## ARLINGTON ST



### INCLUDED EQUIPMENT

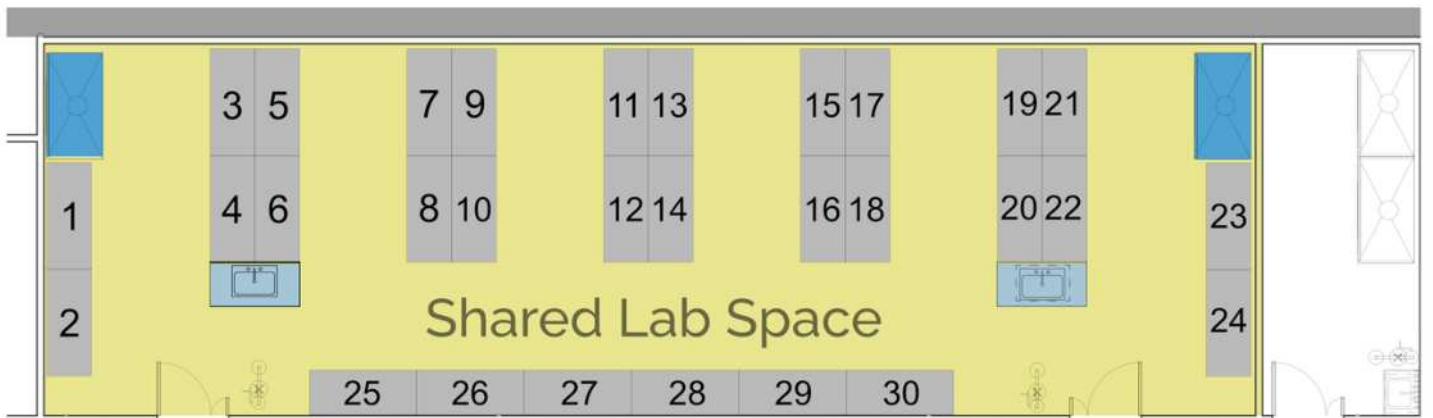
- Attune Flow Cytometer
- Evos 7000
- Spectramax M5
- Nanodrop One
- Step one Plus
- Quibit 4
- Inverted Fluorescent  
Microscope (Research Grade)
- Fluorescent Compound  
Microscope
- Stereo Microscope
- Confocal Microscope

# DETAILS

## ARLINGTON ST



### SHARED LAB



- Shared Lab Suite
- 6ft. Benches
- Sinks
- 6 ft. Chemical Fume Hoods

# OVERVIEW

DEXTER AVE

PRIVATE LAB SUITES

18



STOCKED BREAKROOMS

3



CONFERENCE ROOMS

5



PRIVATE PARKING LOTS

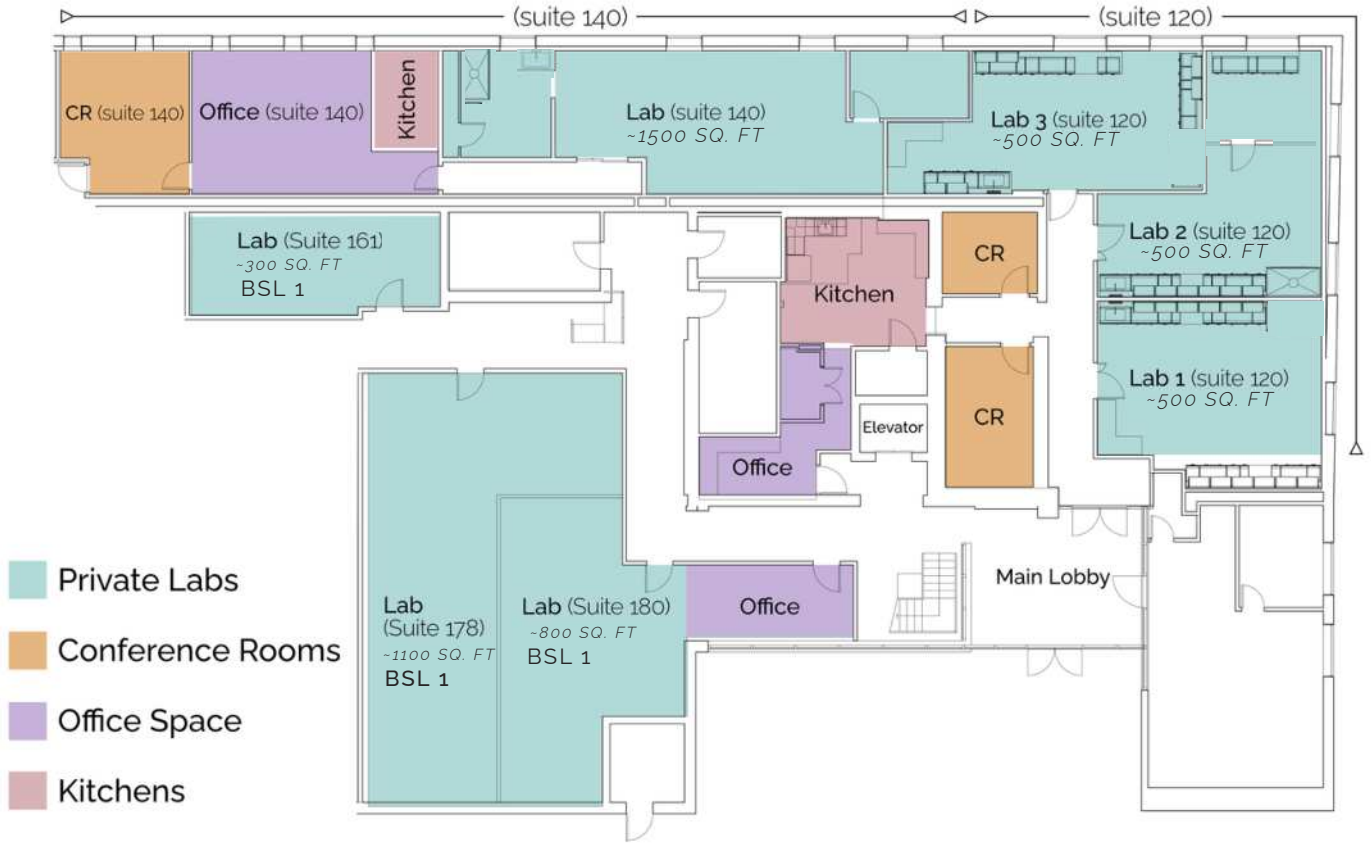
3



# DETAILS

## DEXTER AVE

### 200 DEXTER AVE (DOWNSTAIRS)



### 200 DEXTER AVE (UPSTAIRS)

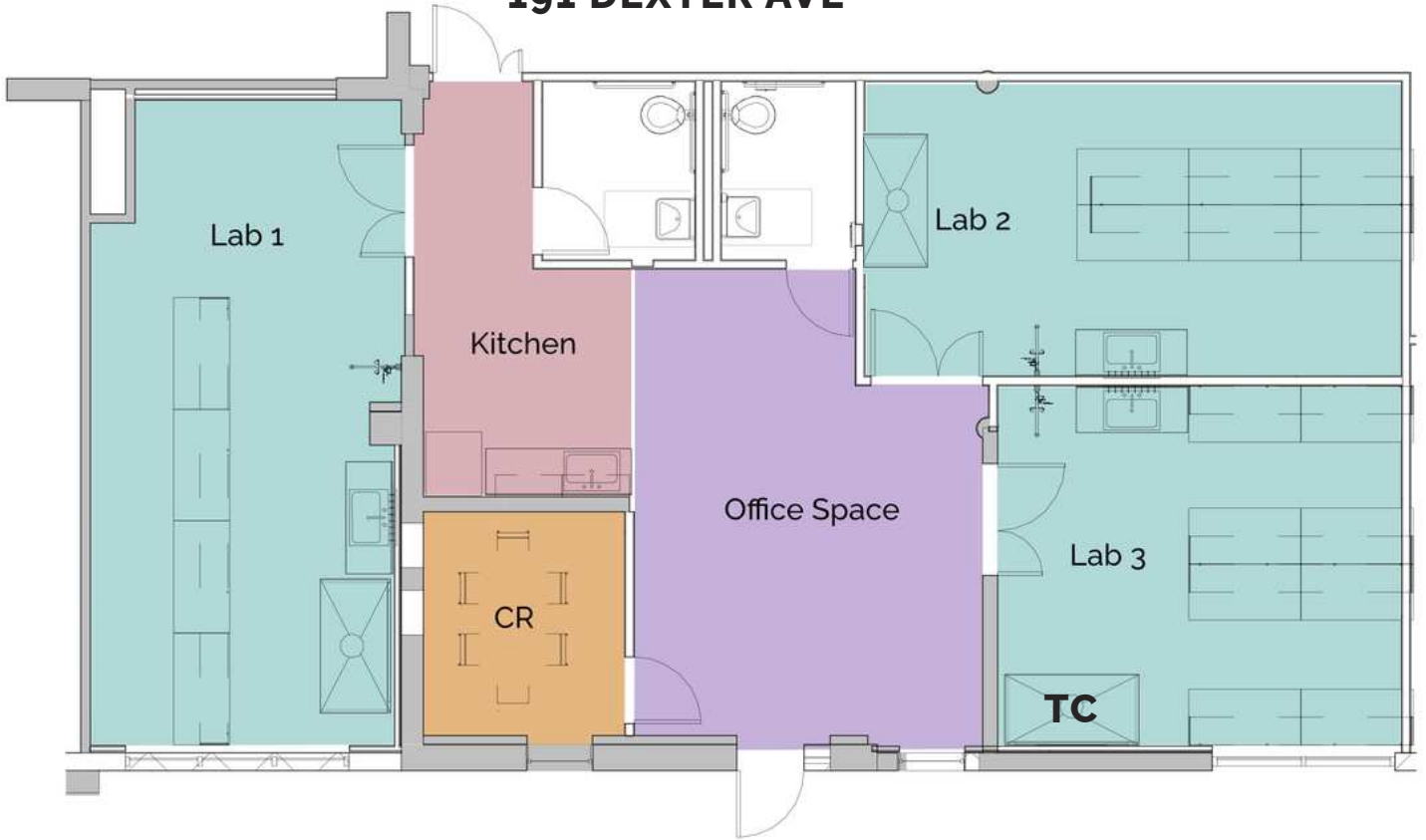




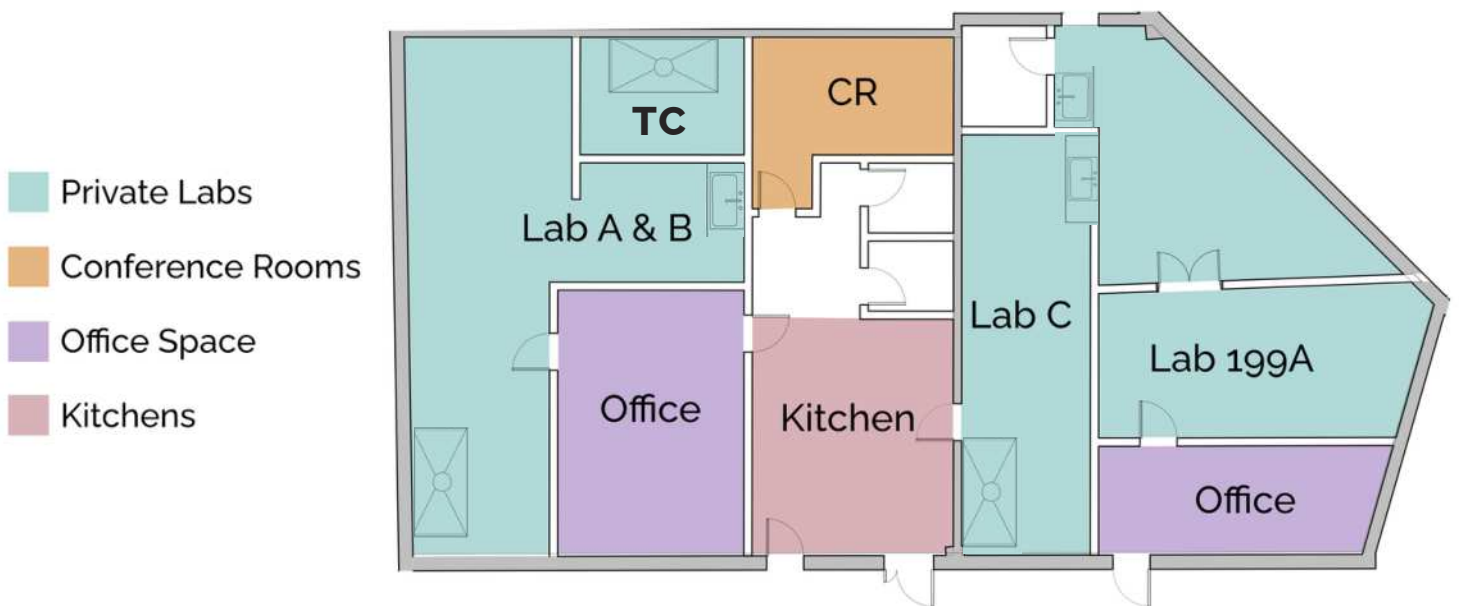
# DETAILS

## DEXTER AVE CONT.

### 191 DEXTER AVE



### 201 DEXTER AVE



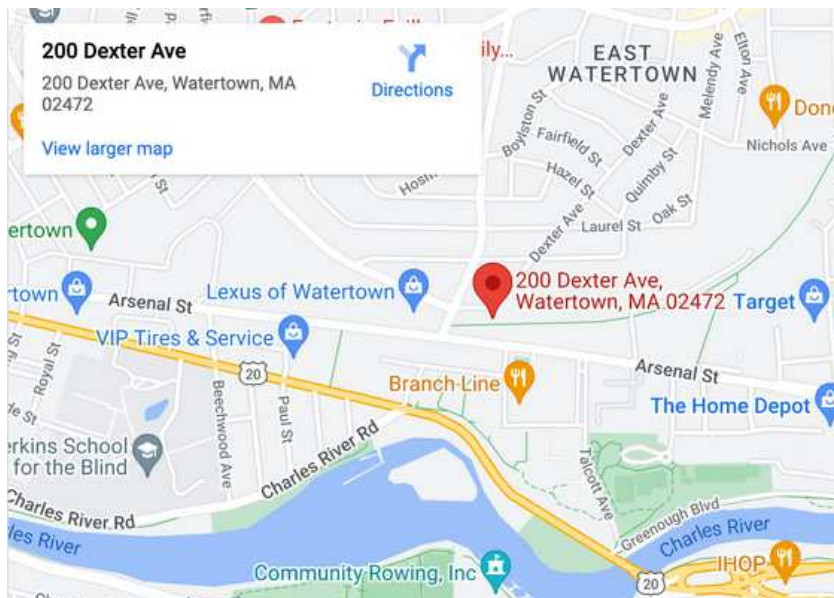
# MAP

## CAMBRIDGE SCIENTIFIC LABS



[CLICK HERE TO VIEW ON MAP](#)

**155 Arlington St.  
Watertown, MA  
02472  
617-354-8900**



[CLICK HERE TO VIEW ON MAP](#)

**191 thru 201  
Dexter Ave.  
Watertown, MA  
02472  
617-354-8900**



# CONTACT

[www.cambridgescientific.com](http://www.cambridgescientific.com)

[info@cambridgescientific.com](mailto:info@cambridgescientific.com)

617-354-8900